

# SHOCK ABSORBING

## R110 SERIES

Shear Disc  
Shock Absorbing

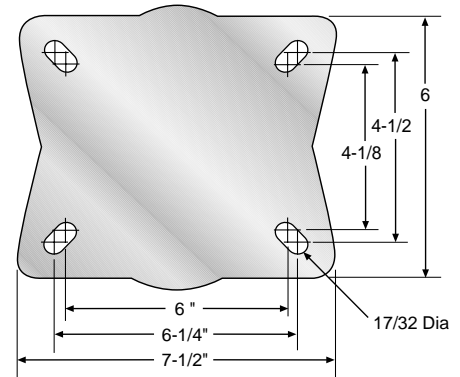


Load Capacity: 640 to 1,500 lbs.

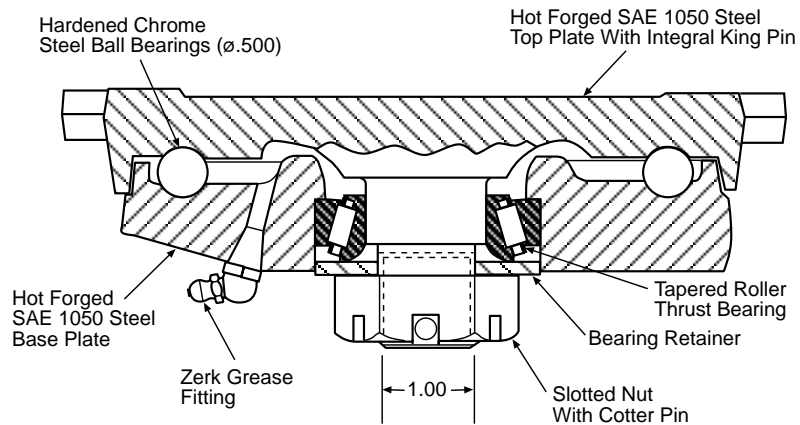
### Quality Features

Very popular in automotive tow-line applications, these casters reduce damage to products, rolling equipment, and floors. The nonlinear suspension also makes the work place quieter by cutting vibration generated noise of in-plant trailers by 50% or more. Heavy-duty caster yoke features SAE 1050 forged steel top plate and yoke base with integral king pin and flame hardened raceways. Because the shear disc works within the confines of conventional mounting dimensions, it is much easier to switch over and start saving floors, equipment and hearing.

### TOP PLATE



### SWIVEL BEARING RACEWAY- R110 SERIES



### Wheel Selection

**CAST IRON HUB**  
MOLD-ON RUBBER

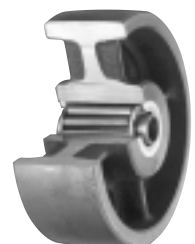
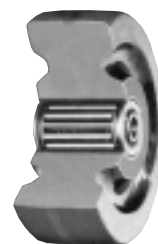
**CAST IRON HUB**  
MOLD-ON POLYURETHANE

**CAST IRON HUB**  
MOLD-ON SOFT POLY

**PHENOLIC**

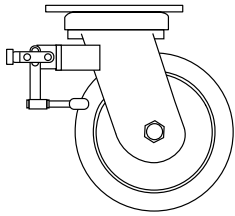
**CAST IRON**

PAGE 134



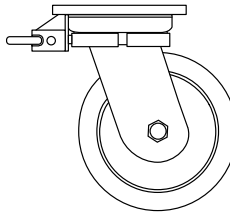
# BRAKES

## Universal Wheel Brake



The strongest, most positive foot-operated brake available. Once locked, this brake cannot be forced open under any amount of abuse until the foot bar is raised to the unlocked position. Works equally well on hard tread or soft tread wheels. Is fully adjustable to compensate for wheel wear, and is even effective on wheels with thread guards or tapered roller bearings. All parts, according to their mechanical functions, stresses, strains and wear are heat treated for longer life.

## Heavy Duty Swivel Lock



This husky, plunger-type swivel lock, with cast malleable iron body can be welded to any of the heavy-duty casters.

Diameter	Tread Width	Load Capacity	Wheel Material	Bearing	Swivel Part Number	Rigid Part Number	Approx. Weight	Overall Height	Swivel Radius
		LBS					LBS		
6	3	680	MOLD-ON RUBBER	TAPERED ROLLER	SDC-110-63-RS	RDC-110-63-RS	32-1/10	9-1/2	5-1/2
		1080	SOFT POLY / CAST IRON HUB		SDC-110-63-PS8	RDC-110-63-PS8	32-1/5		
		1500	CAST IRON		SDC-110-63-CI	RDC-110-63-CI	36-1/10		
			PHENOLIC		SDC-110-63-PR	RDC-110-63-PR	26-1/10		
			POLYURETHANE / CAST IRON HUB		SDC-110-63-PS	RDC-110-63-PS	32-1/5		
8	3	840	MOLD-ON RUBBER*	TAPERED ROLLER	SDC-110-7-RS	RDC-110-7-RS	36-7/10	10-1/2	6-1/2
			MOLD-ON RUBBER		SDC-110-73-RS	RDC-110-73-RS	37	11-1/2	
		1500	CAST IRON		SDC-110-8-RS	RDC-110-8-RS	37	10-1/2	
			PHENOLIC		SDC-110-83-RS	RDC-110-83-RS	37-2/5	11-1/2	
			POLYURETHANE / CAST IRON HUB		SDC-110-8-CI	RDC-110-8-CI	39	10-1/2	
					SDC-110-83-CI	RDC-110-83-CI	39-9/10	11-1/2	
			SDC-110-8-PR		RDC-110-8-PR	33	10-1/2		
			SDC-110-83-PR		RDC-110-83-PR	33-3/10	11-1/2		
		2050	SOFT POLY / CAST IRON HUB		SDC-110-7-PS	RDC-110-7-PS	36-9/10	10-1/2	
			SDC-110-73-PS		RDC-110-73-PS	37-1/5	11-1/2		
			SDC-110-8-PS		RDC-110-8-PS	37-1/2	11-1/2		
			SDC-110-83-PS		RDC-110-83-PS	37-1/2	11-1/2		
			SDC-110-7-PS8		RDC-110-7-PS8	36-9/10	10-1/2		
			SDC-110-73-PS8		RDC-110-73-PS8	37-1/5	11-1/2		
			SDC-110-8-PS8		RDC-110-8-PS8	37-1/5	10-1/2		
			SDC-110-83-PS8		RDC-110-83-PS8	37-1/2	11-1/2		
10	3	1000	MOLD-ON RUBBER	TAPERED ROLLER	SDC-110-10-RS	RDC-110-10-RS	47-1/2	12-1/2	7-1/2
			MOLD-ON RUBBER*		SDC-110-11-RS	RDC-110-11-RS	49-1/2	13-1/2	8-1/2
		1500	CAST IRON		SDC-110-111-RS	RDC-110-111-RS	50-2/5	14-1/2	8-1/2
					SDC-110-9-RS	RDC-110-9-RS	46-1/10	12-1/2	7-1/2
			PHENOLIC		SDC-110-93-RS	RDC-110-93-RS	48-3/10	13-1/2	8-1/2
					SDC-110-94-RS	RDC-110-94-RS	48-4/5	14-1/2	8-1/2
			POLYURETHANE / CAST IRON HUB		SDC-110-10-CI	RDC-110-10-CI	47-9/10	12-1/2	7-1/2
					SDC-110-11-CI	RDC-110-11-CI	50	13-1/2	8-1/2
					SDC-110-111-CI	RDC-110-111-CI	50-1/2	14-1/2	8-1/2
					SDC-110-10-PR	RDC-110-10-PR	34-3/10	12-1/2	7-1/2
	2400	SOFT POLY / CAST IRON HUB	SDC-110-11-PR		RDC-110-11-PR	36-2/5	13-1/2	8-1/2	
			SDC-110-111-PR		RDC-110-111-PR	36-9/10	14-1/2	8-1/2	
		SDC-110-10-PS	RDC-110-10-PS		47-4/5	12-1/2	7-1/2		
		SDC-110-11-PS	RDC-110-11-PS		49-3/10	13-1/2	8-1/2		
		SDC-110-111-PS	RDC-110-111-PS		49-4/5	14-1/2	8-1/2		
		SDC-110-9-PS	RDC-110-9-PS		46-3/10	12-1/2	7-1/2		
		SDC-110-93-PS	RDC-110-93-PS		48-3/5	13-1/2	8-1/2		
		SDC-110-94-PS	RDC-110-94-PS		49-1/10	14-1/2	8-1/2		
		SDC-110-10-PS8	RDC-110-10-PS8		47-4/5	12-1/2	7-1/2		
		SDC-110-11-PS8	RDC-110-11-PS8		49-3/10	13-1/2	8-1/2		
SDC-110-111-PS8	RDC-110-111-PS8	49-4/5	14-1/2	8-1/2					
SDC-110-9-PS8	RDC-110-9-PS8	46-3/10	12-1/2	7-1/2					
SDC-110-93-PS8	RDC-110-93-PS8	48-3/5	13-1/2	8-1/2					
SDC-110-94-PS8	RDC-110-94-PS8	49-1/10	14-1/2	8-1/2					
4	1400	MOLD-ON RUBBER	SDC-110-104-RS	RDC-110-104-RS	52-9/10	12-1/2	8-1/2		
	1500	CAST IRON	SDC-110-104-CI	RDC-110-104-CI	50-2/5	12-1/2			
		POLYURETHANE / CAST IRON HUB	SDC-110-104-PS	RDC-110-104-PS	36-9/10	12-1/2			
	3120	SOFT POLY / CAST IRON HUB	SDC-110-104-PS8	RDC-110-104-PS8	36-9/10	12-1/2			
12	3	1140	MOLD-ON RUBBER	TAPERED ROLLER	SDC-110-112-RS	RDC-110-112-RS	51-9/10	15-1/2	9-1/2
			PHENOLIC		SDC-110-12-RS	RDC-110-12-RS	50-1/2	14-1/2	
		1500	POLYURETHANE / CAST IRON HUB		SDC-110-112-PR	RDC-110-112-PR	39-4/5	15-1/2	
			SDC-110-12-PR		RDC-110-12-PR	38-1/2	14-1/2		
		2760	SOFT POLY / CAST IRON HUB		SDC-110-112-PS	RDC-110-112-PS	52-2/5	15-1/2	
			SDC-110-12-PS		RDC-110-12-PS	51	14-1/2		
SDC-110-112-PS8	RDC-110-112-PS8	52-2/5	15-1/2						
SDC-110-12-PS8	RDC-110-12-PS8	51	14-1/2						